



Flat 2

Warwick Road, 31 | London | SW5 9UL

£ 2,280 Per Month

 **cityrelay**

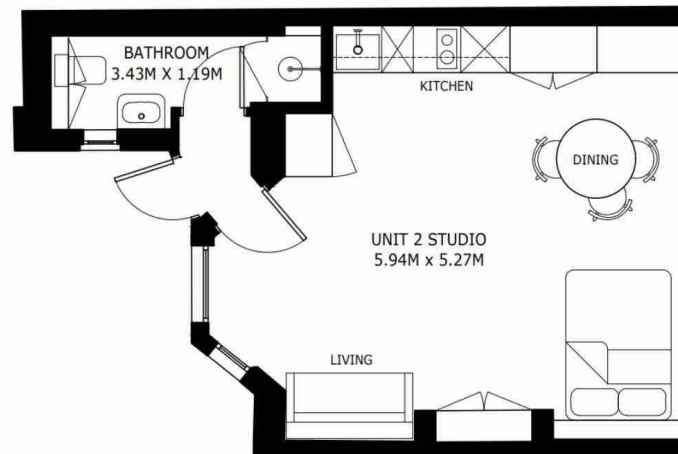
Flat 2

Warwick Road, 31 |
London | SW5 9UL
£ 2,280 Per Month

A beautifully presented, newly refurbished studio apartment set in the heart of Earl's Court, just a short 200-metre walk from Earl's Court Underground Station, offering excellent transport links via the Piccadilly and District lines.



- Refurbished apartment in SW5
- Good natural light
- Separate modern kitchen with integrated appliances
- Lower ground floor
- Bespoke storage and fitted shelving
- Private contemporary bathroom



Energy Efficiency Rating		Current	Potential
<i>Very energy efficient - lower running costs</i>			
(92 plus)	A		
(81-91)	B		
(69-80)	C	72	75
(55-68)	D		
(39-54)	E		
(21-38)	F		
(1-20)	G		
<i>Not energy efficient - higher running costs</i>			
England & Wales		EU Directive 2002/91/EC	

Council Tax Band C
EPC Rating C

10 Cromwell Place
London
SW7 2JN
02038 650611
lettings@cityrelay.com